

Ruth Lang

BA(Hons) DipArch MArch

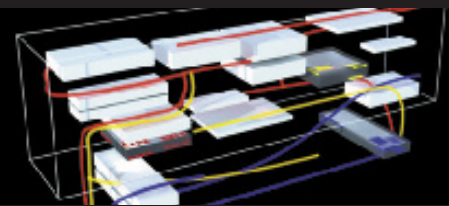
12 Lord Holland Lane
Myatts Fields South
London
SW9 6NN

+44 7703 971994
ruth.lang@mac.com

consultant liaison



time management



marketing



project coordination



cross-sector experience

Personal Information

Born 20th October 1980

Nationality: British

ARB registered. I hold a full, clean UK driving license and CSCS Card.

I am both Mac and PC literate, and am proficient in such programs as Vectorworks, AutoCAD, ArchiCAD, SketchUp, Adobe CS (InDesign, Photoshop), Director, Dreamweaver and Microsoft Office (Word, Excel, PowerPoint). I enjoy original research and critique, find learning new software relatively easy, and have a particular interest in the role of narrative and communication within architectural design.

Education

Bartlett School of Architecture, UCL

January 2008 – December 2008

Part 3: Certificate in Professional Practice and Management in Architecture

University of Portsmouth, School of Architecture

October 2004 – July 2006

“Speaking Volumes” Architecture and Linguistics

Master of Architecture - Merit

October 2002 – July 2004

Diploma in Architecture - Merit

September 1998 – July 2001

BA (Hons) Architecture - 2:1

Farmor’s School, Fairford, Gloucestershire

September 1996 – July 1998

A Level Art, Physics and Maths

Elected Deputy Head Girl

September 1991 – July 1996

11 GCSEs grade A* - B, including History, French and Statistics

Employment

Inside Out Architecture, London

March 2011 - Ongoing

Running bespoke high-end residential schemes from concept to construction, alongside developing light-fit mixed-use solutions for leisure environments. Constantly reinventing the wheel to fit our clients’ demands - be it for material innovation, complex joinery solutions or the coordination of exposed services design - keeps us on our toes.

Levitt Bernstein Architects, London

April 2010 - March 2011

Team leader for the development of 8 social housing projects split across 5 sites in Walthamstow, London, at planning, detail design and construction phases, alongside research and compilation of reports into minority housing demands - for religious groups, gypsies, those with dementia, etc - in association with the HCA and CABE.

S&P Architects, London

March 2009 - April 2010

Overseeing of site operations and construction packages working with Zaha Hadid Associates on the London Aquatics Centre. Due to the size and nature of the scheme, this involved complex sub-contractor issues, contract coordination and working within design parameters from the Olympic Delivery Authority over and above those usually involved in such a project.

Mark Pinney Associates, London

February 2008 - March 2009

New build and fit out retail scheme development, on tight timescales and with a high expectation for the quality of resolution within the scheme. Working as executive architect overseeing site operations for a flagship jewellery store in Mayfair, which saw the design proceed from concept to completion in seven months. A close dialogue with consultants, contractors and the planning department throughout was key to delivering this scheme on time and to budget.

Nissen Adams, London

May 2007 - February 2008

Brownfield residential and office schemes requiring aspects of refurbishment and integration with existing structures.

Architecture PLB, London and Winchester

March 2006 - May 2007

Developing a series of feasible and sustainable briefs for fledgeling projects as part of the Building Schools for the Future initiative, as well as model making and planning submissions for contemporary schemes sited within conservation areas.

Robert Benn and Associates, Portsmouth, Hampshire

July 2003 - October 2003

R H Partnership Architects, Brighton, East Sussex

September 2001 - September 2002

Associated Experience

Studio Tutor, University of Portsmouth

October 2005 - Ongoing

Leading undergraduate studio design sessions for schemes varying in scale, context and complexity from single person rural retreats to mixed-use large scale urban integration, encouraging student-led learning and specialising in innovative approaches to teaching strategies.

Contributing Writer, Londonist

August 2009 - Ongoing

Specialist coverage of arts and cultural festivals, installations and exhibitions, restaurant reviews and providing topical comment on events in London

PARK(ing) installation, Southbank, London - Architecture Week 2007

The research and development of a two day installation at the Royal Festival Hall, investigating possible uses for land the size of a car parking space in order to counteract environmental threats. This involved investigations into density and juxtaposition of landscapes, as well as gaining backing from sponsors and arranging media coverage.

Bene Eat Art competition - Winner 2007

A short design challenge to transform two slabs of gingerbread into a sculpture on the theme of "open space - the old versus the new".

Architects Sans Frontieres Summer School 2006

A residential course at the Eden Project, Cornwall, covering aspects of sustainability and redevelopment, and investigating the means by which countries affected by disaster can rebuild their cultures in a non-generic manner. Dwellings built within the tropical biospheres using waste materials in an innovative manner sought to test these theories and to develop feasible methods for their construction.

Aaron Memorial Travel Scholarship - Awarded by Leeds Metropolitan University 2001

Site-based independent research leading to the production of an interactive CD of interwoven images and text pieces highlighting and reiterating the key interrelated features which have combined to make Dutch architecture so successful over the past few generations, investigating themes of density, community, flexibility, and sustainability.

References

Professional:

Mr Rupert Cook
Director
architecture plb
St Thomas Street
Winchester
Hampshire
SO23 9HD

Academic/personal:

Mr Martin Pearce
University Tutor
15 Taswell Road
Southsea
Hampshire
PO5 2RG

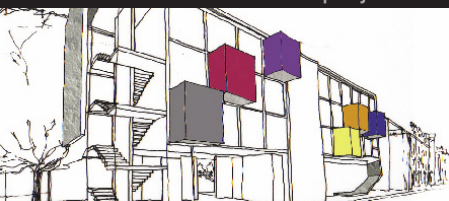
t : 01962 842200
e: rupertcook@architectureplb.com

t : 02392 842083
e: martin.pearce@port.ac.uk

media and sponsor liaison



installation projects



community development



external interests